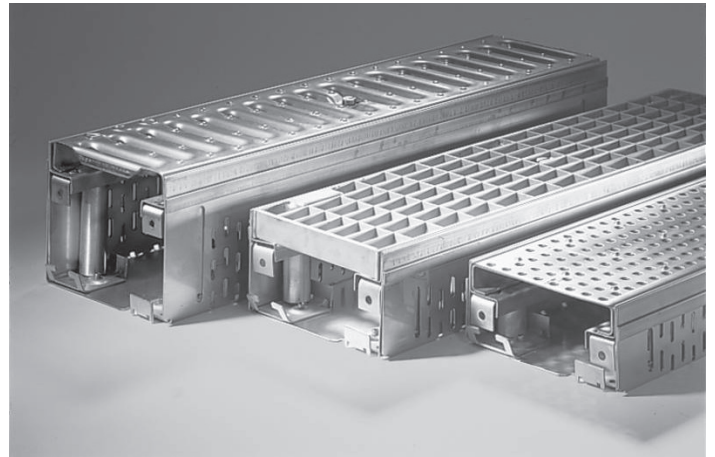


# OPTIGREEN DRAINAGE GUTTERS

## Drainage Gutters and Terrace Grids

Optigreen Drainage Gutters and Terrace Grids to guide surface water from the floor surfaces into the roof drainage outlets, to drain water-guiding layers, to guide driving rain on facades, as a collection channel to drain greened roof areas and as a branch channel between downpipes and roof drainage outlets.



<b>Material</b>	Galvanised steel or stainless steel V2A
<b>Side walls</b>	Slotted (integrated gravel retainer)
<b>Adjustable gutters</b>	Gutter widths: 100 / 130 / 155 / 200 / 250 mm Gutter lengths: 500 / 1,000 mm Adjustable height increments: 55 - 78 mm / 78 - 108 mm / 108 - 168 mm
<b>Fixed gutters</b>	Gutter widths: 130 / 155 / 200 / 250 mm Gutter lengths: 500 / 1,000 / 2,000 mm Gutter heights: 50 / 75 mm
<b>Standard cover grids</b>	Mesh grid (MW 30 x 10 mm) Punched grid Bar grid
<b>Accessories on request</b>	Corner elements, face walls, branch channels etc. / other grid covers such as e.g. longitudinal bar grids
<b>Quantity/ delivered unit</b>	According to size of order
<b>Delivery form</b>	Individually in a package or on euro pallet
<b>Pack size</b>	According to size of order

### Area of use

- Guiding of surface water from floor surfaces e.g. in inspection chambers via roof drainage outlets
- To drain water-bearing layers
- To guide driving rain from facades
- As a collection channel for draining green roof areas
- Separate grating covers as inspection and discharge elements within paving areas on stilts

The preceding details are guideline values established under laboratory conditions. These values are subject to a certain manufacturing tolerance. The data contained in this product information sheet represents Optigreen's technical knowledge at the time of publication. Optigreen reserves the right to change and update details in accordance with new insights and to modify specified properties accordingly. No liability accepted for misprints.r.

### Optigrün international AG

Am Birkenstock 15 – 19,  
72505 Krauchenwies-Göggingen  
Tel. +49 7576 772-0, Fax +49 7576 772-299, info@optigruen.de

### Optigreen Limited (Service UK only)

Suite G5 Albany Chambers, 26 Bridge Road East  
Welwyn Garden City (Herts), AL7 1HL  
Phone +44 203 5899400, Fax +44 207 1171664, info@optigreen.co.uk

