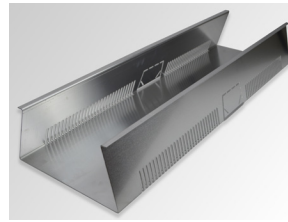


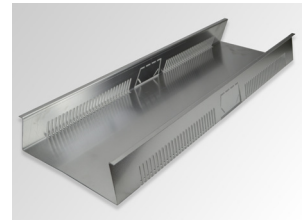
# OPTIGREEN TAR

## Triangle Discharge Channels

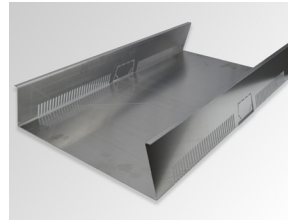
Open gutter for the collection and linear guiding of excess water from greened or gravelled roof areas. The gutter construction is particularly suited to optimising the flow of water with negative pressure drainage systems on large roof areas.



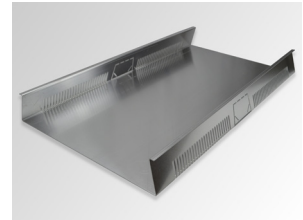
TAR 120-250 (Item No. 30314)



TAR 80/250 (Item No. 30310)



TAR 120-450 (Item No. 30316)



TAR 80/440 (Item No. 30312)

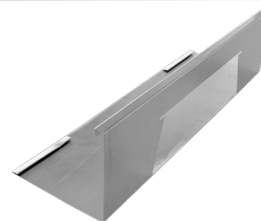
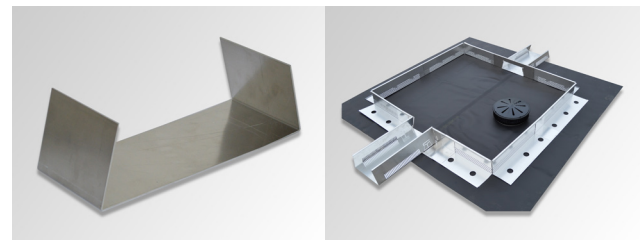
<b>Material</b>	Aluminium
<b>Nominal thickness</b>	1.5 mm
<b>Colour</b>	Aluminium natural
<b>Dimensions</b>	TAR 80/250: H 80 x W 250 x L 2000 mm TAR 80/440: H 80 x W 440 x L 2500 mm TAR 120/250: H 120 x W 250 x L 2500 mm TAR 120/450: H 120 x W 450 x L 2500 mm
<b>Drainage performance</b>	TAR 80/250: RP 0° = 5.1 l/s RP 1% = 7.3 l/s TAR 80/440: RP 0° = 9.4 l/s RP 1% = 13.4 l/s TAR 120/250: RP 0° = 9.6 l/s RP 1% = 11.0 l/s TAR 120/450: RP 0° = 18.0 l/s RP 1% = 20.8 l/s
<b>Quantity/ delivered unit</b>	according to size of order
<b>Delivery form</b>	according to size of order by parcel shipment or on euro pallets by forwarding agent.
<b>Pack size</b>	according to size of order
<b>Delivery weight</b>	TAR 80/250: approx. 1.8 kg/piece TAR 80/440: approx. 2.5 kg/piece TAR 120/250: approx. 2.0 kg/piece TAR 120/450: approx. 2.8 kg/piece

### Area of use

To form open gutters in the angled areas, in which greater quantities of water from the adjacent greened or gravelled roof areas flow together and have to be guided to the respective roof drainage outlets.

### Besondere Eigenschaften

- Cut-outs to connect the Optigreen Triangle Water Conduit WLP plus every 84 cm
- Special shapes:
  - Cut-outs to connect the triangle collection channel type TSK possible
  - special dimensions available on request for an extra charge.
- Accessories:
  - Optigreen Triangle Discharge Channel Connector TAR
  - Optigreen UV Protective Film TAR-UVS
  - Optigreen Triangle Discharge Channel Adapter TAA



The preceding details are guideline values established under laboratory conditions. These values are subject to a certain manufacturing tolerance. The data contained in this product information sheet represents Optigreen's technical knowledge at the time of publication. Optigreen reserves the right to change and update details in accordance with new insights and to modify specified properties accordingly. No liability accepted for misprints.

### Optigrün international AG

Am Birkenstock 15 – 19,  
72505 Krauchenwies-Göggingen  
Tel. +49 7576 772-0, Fax +49 7576 772-299, info@optigruen.de

### Optigreen Limited (Service UK only)

Suite G5 Albany Chambers, 26 Bridge Road East  
Welwyn Garden City (Herts), AL7 1HL  
Phone +44 203 5899400, Fax +44 207 1171664, info@optigreen.co.uk

