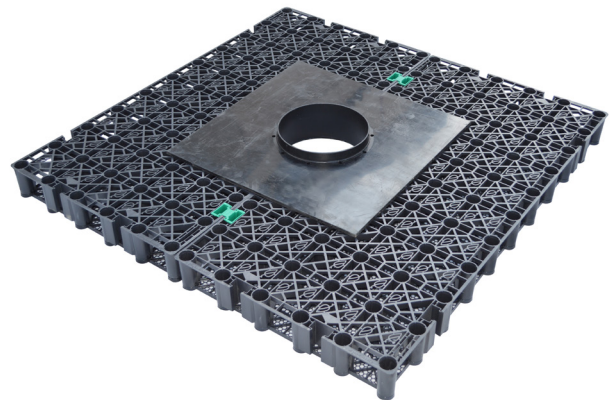


# OPTIGRÜN LVP

## Load Distribution Panel

Load Distribution Panel for the distribution of occurring loads through inspection chambers and attachments. Including Water Retention Box WRB 95 with fitting cutout.



<b>Material</b>	HDPE (Load Distribution Panel) Recycled PP (WRB 95)
<b>Colour</b>	black
<b>Material thickness</b>	10 mm (Load Distribution Panel)
<b>Dimensions</b>	Load Distribution Panel: L 600 x W 600 x H 70 mm Opening diameter 225 mm/209 mm (external/internal) Load Distribution Panel with WRB: L 1190 x W 1180 x H 135 mm
<b>Weight</b>	approx. 3,5 kg/piece (Load Distribution Panel) approx. 14 kg/piece (Load Distribution Panel with WRB)
<b>Quantity/delivery unit</b>	according to size of order
<b>Delivery form</b>	according to size of order
<b>Delivery weight</b>	according to size of order

### Area of use

- Under inspection chambers and attachments in traffic areas

### Specific properties

- Suitable for combination with any chambers and attachments with inner diameter > 225 mm and outer diameter < 600 mm
- Suitable for lorry traffic
- Not suitable for vacuum drainage

The preceding details are guideline values established under laboratory conditions. These values are subject to a certain manufacturing tolerance. The data contained in this product information sheet represents Optigrün's technical knowledge at the time of publication. Optigrün reserves the right to change and update details in accordance with new insights and to modify specified properties accordingly. No liability accepted for misprints.

### Optigrün international AG

Am Birkenstock 15 – 19,  
72505 Krauchenwies-Göggingen  
Tel. +49 7576 772-0, Fax +49 7576 772-299, info@optigruen.de

### Optigreen Limited (Service UK only)

Suite G5 Albany Chambers, 26 Bridge Road East  
Welwyn Garden City (Herts), AL7 1HL  
Phone +44 203 5899400, Fax +44 207 1171664, info@optigreen.co.uk

